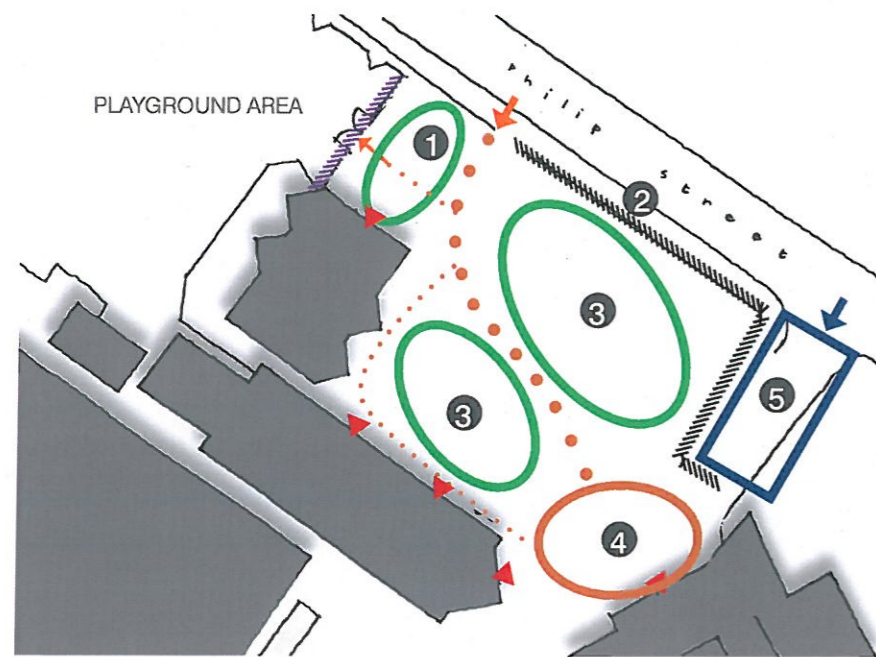
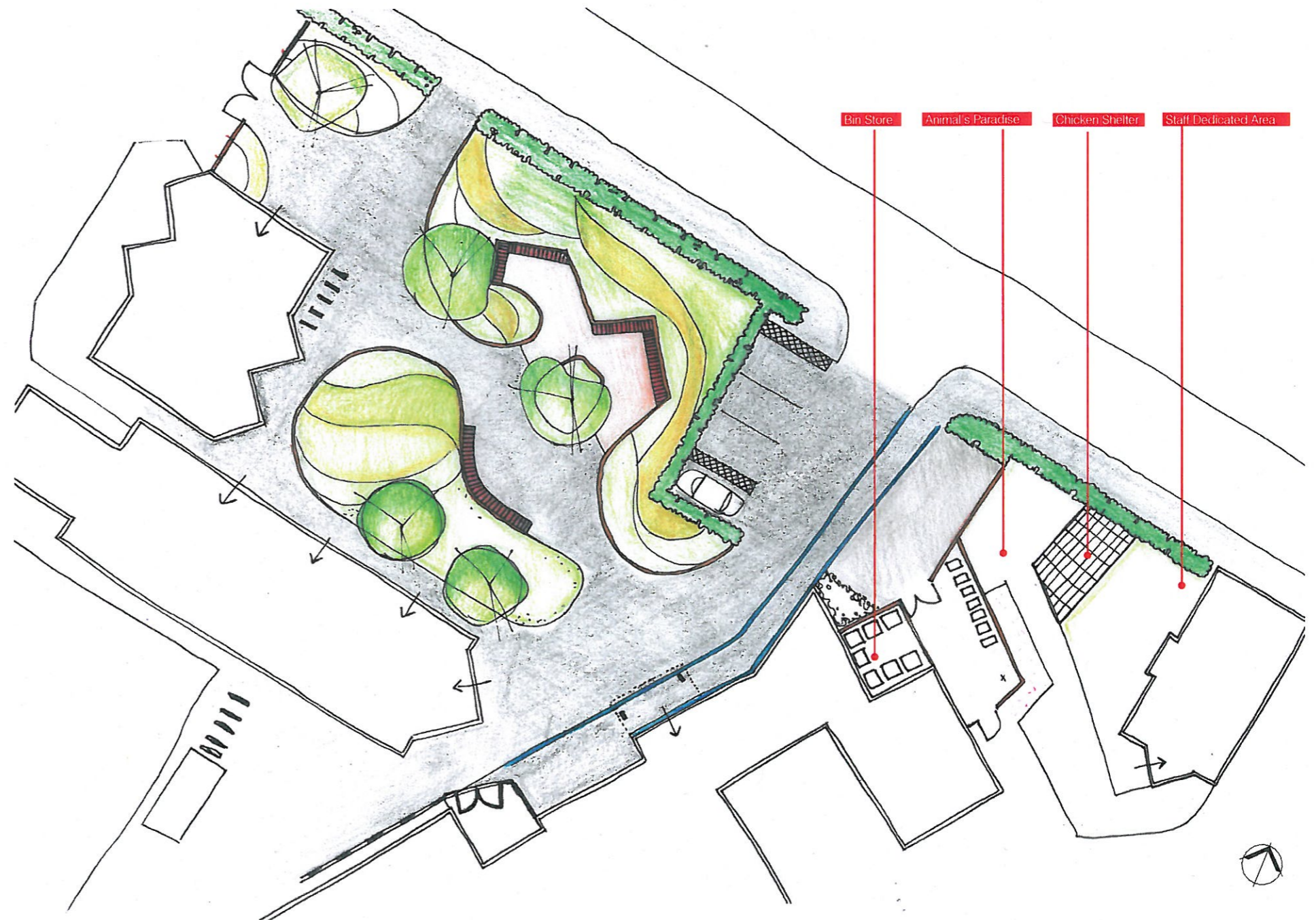


WINDMILL HILL CITY FARM

Concept Board



- 1 ENTRANCE TO PLAYGROUND**
 - Hidden from main view into site
 - Set the boundary/fenceline to define and enhance entrance space
- 2 FRONTAGE ARRIVAL TO PHILIP STREET**
 - Lack of distinctiveness (anonymous entrance) and signage
 - Broken and poor quality green boundary
 - Reinforce green boundary; maintain at 1.2m high to aid natural surveillance into site
- 3 PROPOSED RAISED GARDEN**
 - Existing parking takes up 2/3 of the overall arrival space;
 - Potential for social and communal use
 - Lack of identity, character and guidance through the space
 - No materials diversity, all hard continuous surface
 - Unlevelled surface, not easily accessible by people with reduced mobility
 - Unknown location and depth of underground surface may limit in-ground construction and led to raised planters (brick/block construction or recycled materials e.g containers)
 - Provide seating and diversity planting and food production opportunities
- 4 PROPOSED ARRIVAL SPACE**
 - Re-define and enclose entrance space
 - Provide cycle parking
 - Access for mini van drop off space
- 5 PROPOSED PARKING AREA AND VEHICULAR ACCESS**
 - 2 nos. disabled parking spaces
 - 2 nos general/drop-off parking bays
 - Access for a reversing delivery vehicular



- Pedestrians, vehicle and delivery area Entrance
- Building entrances
- Potential additional pedestrian entrance to improve access and safety
- Important route across site to be reinforced
- New fence line and gateway
- Green screen; hedgerow

