

## The Sun



5) Bee loves the sunshine it makes him feel warm and giggly.



Can you make shadow puppets with your hands?

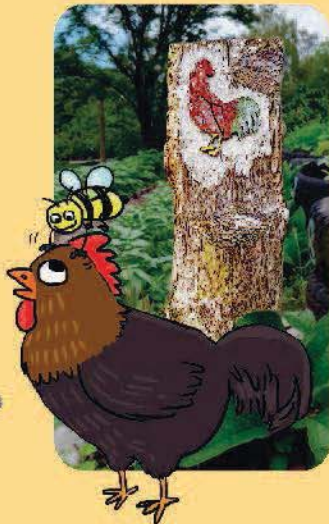


What is the weather like today? Is it sunny? Is it raining? Can you catch a raindrop on your tongue?

## The Cockerel

6) The bee lands on the cockerels comb and tickles him until he cock-a-doodle-does. When the cockerel crows all the animals join in.

What animal sounds can you make?



Can you strut your stuff like a funky chicken?

## The Frog



Do you know any songs about frogs?

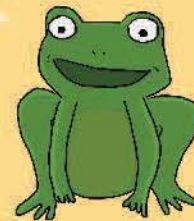


Do you know this one?

Five little speckled frogs,  
sat on a speckled log.  
Eating the most delicious  
grubs.  
Yum Yum.



7) Bee feels at home in the wild life area. There are plenty of flowers to pollinate here. Bee can also make new friends. What would bee say to the frog?



Well done for joining in the story trail. Would you like to have a drink and a snack at the cafe?  
Or in the picnic area?



## Contact Us

Windmill Hill City Farm Ltd.  
Philip Street, Bedminster, Bristol, BS3 4EA  
Telephone: 0117 963 3252  
email: [info@windmillhillcityfarm.org.uk](mailto:info@windmillhillcityfarm.org.uk)



Supported by  
**The National Lottery**  
through the Heritage Lottery Fund



# THE GROUNDWORKS STORY TRAIL



The trail starts at the beginning of the community garden and allotment space, by the archway.

Follow the path round and have fun!

Discover the creatures from the story on our carved wooden posts.

### The Bee



1) One day a buzzy bee flew around the farm looking for the way into the gardens. Which way do you think the bee went?

Can you buzz like a bee?

### The Oak leaf



2) The bee is searching for some pollen. Bee found a leaf and decided to have a little rest.

How many different leaves can you see on the trees around you?



Fly with a leaf kite? *like a* Sai BOAT

### The Sycamore Leaf



3) Buzzing on to the next post. How did bee get here? How do you like to

How are you going to move to the next post?

### The Flower



4) Bee lands on a beautiful red flower. The flower is bee's favourite place to land. What can you see?

Find something you would like to draw. Rub a bit of mud or grass on here and see what that looks like.



Make your own

